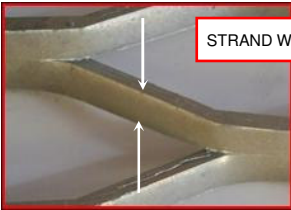
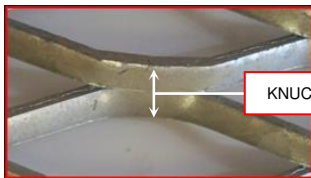
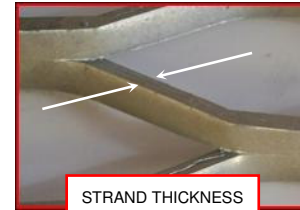


The term **STRAND** refers to the actual components which constitute the diamond pattern in expanded metal.



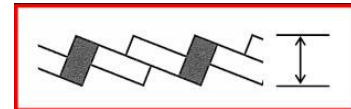
The term **STRAND WIDTH** refers to the width of the material and is always half of the knuckle measurement.

The term **STRAND THICKNESS** refers to the thickness of the material and, in walkway mesh, is typically 5mm.

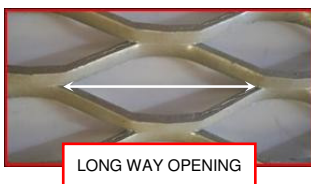


The term **KNUCKLE** refers to the intersection of two strands and is always the width of two strands.

The term **OVERALL HEIGHT** refers to the actual measurement of the perpendicular height of the mesh measured at the angled knuckle.



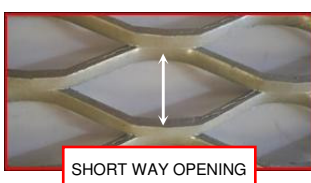
The term **LONG WAY MESH (LWM)** refers to the distance from the centre point on a knuckle to the corresponding point on the following knuckle measured across the LONG WAY. Long Way Mesh is the same as Span in Grating.



The term **LONG WAY OPENING (LWO)** refers to the distance from the inside of the knuckle in the LONG WAY.



The term **SHORT WAY MESH (SWM)** refers to the distance from the centre point on a knuckle to the corresponding point on the following knuckle measured across the SHORT WAY.



The term **SHORT WAY OPENING (SWO)** refers to the distance from the inside of the knuckle in the SHORT WAY.